

# Collaborations

Update  
December 2006

*Published for the Early Intervention  
Community of Bergen, Hudson and  
Passaic Counties.  
Contributors for this issue:  
Joy Hammerman  
Desireé Bonner*

## HELPFUL HANDS TRANSITION TO PRESCHOOL WORKSHOP

*Friday, December 15, 2006  
10:00 – 12:30 pm  
Bergen County SCHS-CMU  
327 East Ridgewood Avenue, Room 202  
Paramus, NJ 07652*

*\*\*\*Learn about the process of transitioning your child from  
the Early Intervention System to Special Education services  
under your local school district, including the new changes  
to IDEA.*

The workshop is FREE but registration is required.  
Please call or email Lily at 973-256-8484 or  
[Lily@nreic.org](mailto:Lily@nreic.org) to register.  
Unfortunately, childcare will not be provided

**The Early Hearing Detection and Intervention (EHDI) Program** will provide you with a copy of the new Pediatric Hearing Health Care Directory. The purpose of this manual is to assist parents and professionals in locating a variety of pediatric audiologic and hearing aid dispensing facilities throughout the State. The NJ EHDI Program is dedicated to ensuring early detection of childhood hearing loss and aims to improve access to newborn hearing health care services for all children in New Jersey. The directory can be viewed at [www.nj.gov/health/fhs/ehdi](http://www.nj.gov/health/fhs/ehdi) or call 609-292-5676 to receive a copy.

### *"INSPIRATION"*

*Star Light, Star Bright, First star I see tonight,*

*I wish I may, I wish I  
might, have the wish I  
wish tonight.*

*I wish that my sister  
could walk and talk and  
do all the things that we  
can do. Because most  
of the time she is left  
out or in hospital (she  
has been in the hospital  
for most of this year).*

*She feels really  
uncomfortable and she  
can not eat.*

*She is really special.*

*From Ben (aged 8)*



A child with special needs can quickly become the center of family attention, for better or worse. While an intensive focus on therapy and treatment can be good for the child receiving them, they can often leave siblings feeling neglected — and if one parent is taking on most of the burden or disagrees with the course being followed, strain can show in a marriage as well. The good news is that help and support for individual family members and the family in general is often only a mouse-click away.

<http://specialchildren.about.com/od/familyissues/index.htm?nl=1>

## **Useful Links for Families Affected by a Developmental Disability**



### **The Division of Developmental Disabilities**

As part of its services provision, DDD offers [case management](#), [residential services](#), and various [family support services](#) that help both people with developmental disabilities and their families. DDD services also include the provision of [day programs](#), which help the consumer develop vocational skills and learn how to use community resources; [supported employment services](#). <http://www.state.nj.us/humanservices/ddd/dddservices.html>

### **Wrightslaw**

Parents, educators, advocates, and attorneys come to Wrightslaw for accurate, reliable information about special education law and advocacy for children with disabilities. Wrightslaw includes thousands of articles, cases, and free resources on dozens of special education topics. <http://wrightslaw.com/>

### **New Jersey Protection and Advocacy, Inc.**

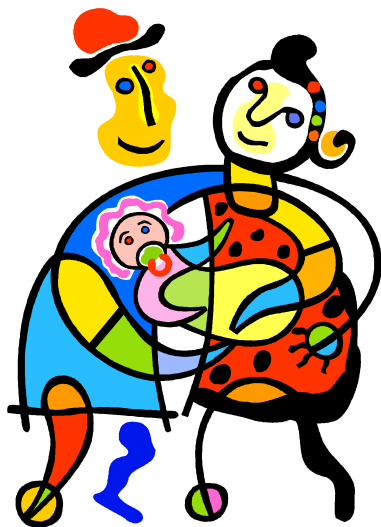
New Jersey Protection and Advocacy, Inc. (NJP&A) is the consumer-directed, non-profit organization that serves as New Jersey's designated protection and advocacy system for people with disabilities in the state. NJP&A provides information and referral and a broad range of advocacy services, including legal representation in numerous [cases](#) in state and federal courts. <http://www.njpanda.org/index.htm>

### **The Boggs Center**

The Elizabeth M. Boggs Center, as a University Center for Excellence in Developmental Disabilities, values uniqueness and individuality and promotes the self-determination and full participation of people with disabilities and their families in all aspects of community life. The Boggs Center, through partnerships and collaborations, builds capacity in organizations, systems, and communities in a culturally competent manner. The Boggs Center prepares students through interdisciplinary programs, provides community training and technical assistance, conducts research, and disseminates information and educational materials. <http://rwjms.umdj.edu/boggscenter/index.htm>

### **Statewide Parent Advocacy Network (SPAN)**

The mission of SPAN is to empower families and inform and involve professionals and other individuals interested in the healthy development and education rights of children. Through this collaboration, all children will become fully participating and contributing members of our communities and society. SPAN's multi-faceted program is carried out by bilingual, multi-racial staff of parents of children with and without disabilities. [www.spannj.org](http://www.spannj.org)



### **New Jersey Coalition for Inclusive Education (NJCIE)**

The New Jersey Coalition for Inclusive Education is a non-profit organization of parents and professionals dedicated to equity and access for all students in their neighborhood schools. Since 1990 the New Jersey Coalition for Inclusive Education has been the leading force in New Jersey spreading knowledge about the benefits of inclusive education. Inclusive education creates the opportunity for students, regardless of their differences or disabilities, to be educated in age-appropriate general education classes, in natural proportions, with their friends and neighbors. Inclusive schools provide the supports that students and educators need to ensure everyone's meaningful participation. <http://www.njcie.org>